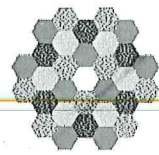
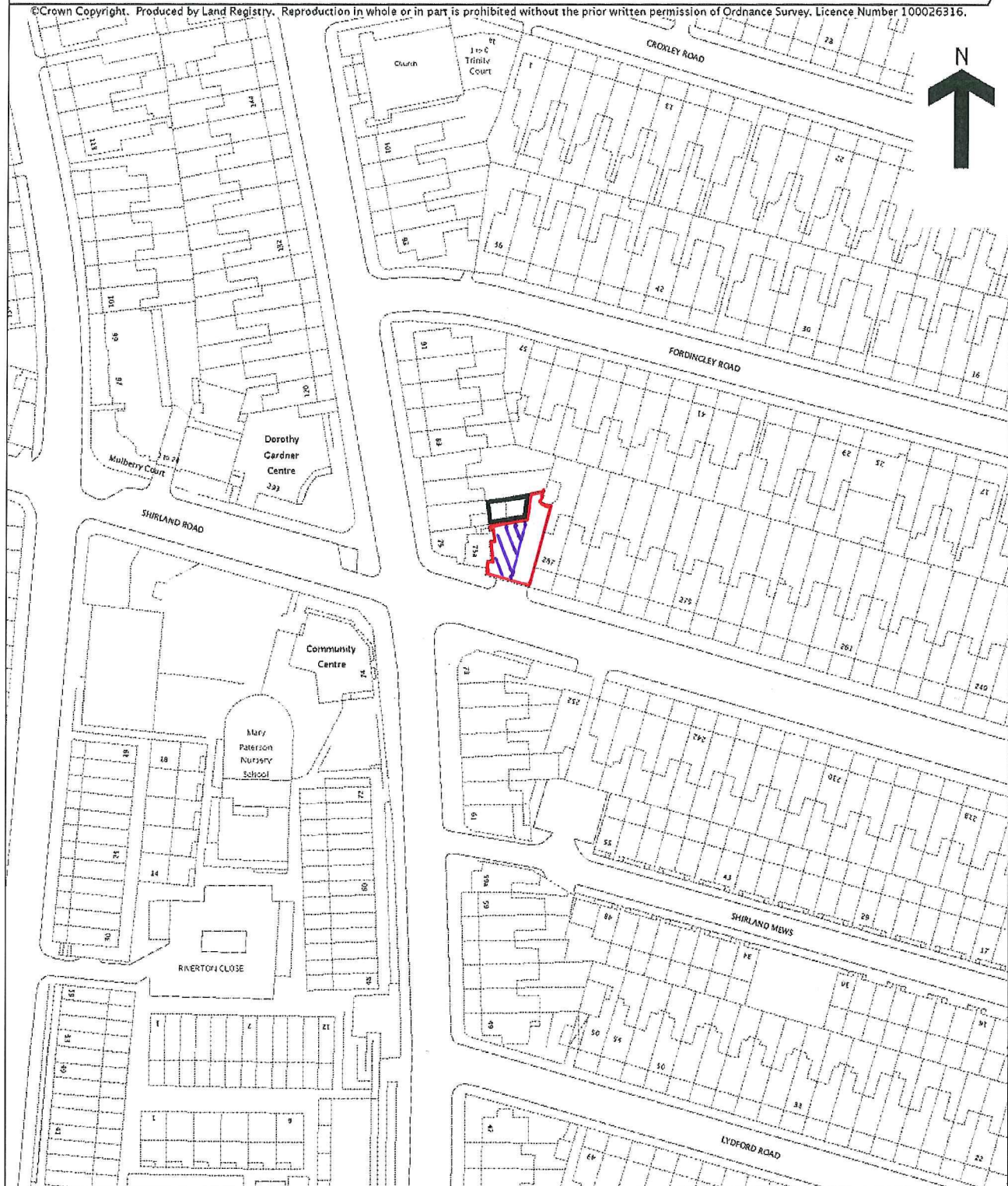


# Land Registry Current title plan

Title number **NGL802421**  
Ordnance Survey map reference **TQ2482NE**  
Scale **1:1250**  
Administrative area **CITY OF WESTMINSTER**



©Crown Copyright. Produced by Land Registry. Reproduction in whole or in part is prohibited without the prior written permission of Ordnance Survey. Licence Number 100026316.



This is a print of the view of the title plan obtained from Land Registry showing the state of the title plan on 26 April 2010 at 12:08:36. This title plan shows the general position, not the exact line, of the boundaries. It may be subject to distortions in scale. Measurements scaled from this plan may not match measurements between the same points on the ground. See Land Registry Public Guide 7 - Title Plans.

This title is dealt with by Land Registry, Croydon Office.